

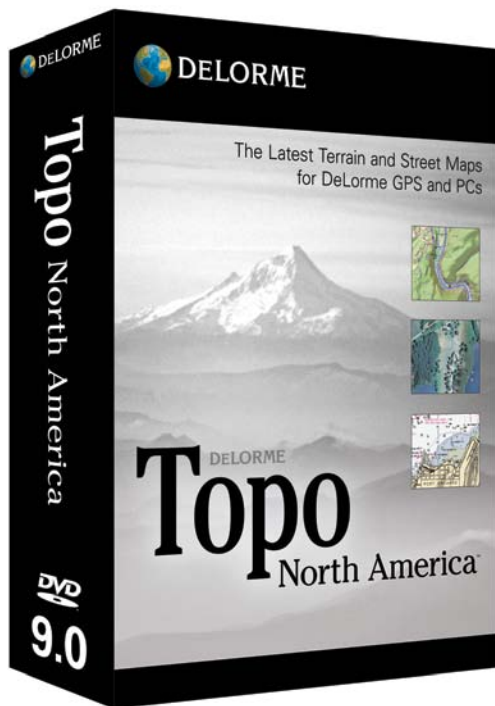
DE LORME Topo North America™



Terrain and Street Maps For DeLorme GPS and PCs

Product Description

Scout your destination as if you were there, anywhere in the U.S. and Canada, with up-to-date terrain and road detail. Explore or fly over realistic 3-D. Import aerial imagery. Find U.S. trails and public recreation lands (now including BLM and State Trust lands). Route your travels over roads and trails. See elevation profiles. Easily exchange GPS waypoints, routes, and tracks with DeLorme PN-Series receivers. Customize and print maps at a wide range of scales. DeLorme Topo North America 9.0 does it all.



The Most Complete Mapping Software for Recreation

DeLorme Topo North America 9.0 is the most comprehensive computer mapping program for outdoor recreation, with unsurpassed maps, available imagery, trip planning features, on-road navigation, and GPS capabilities.

EVERYTHING you need comes in-the-box including:

- Complete U.S. and Canada topographic and detailed streets maps
- Major roads for Mexico
- Over 4 million places-of-interest (POIs) in the U.S. and Canada
- Extensive U.S. trails network and public lands, including BLM
- Flexible printing choices
- Ability to share your custom maps via a secure Web URL
- In addition to the program DVD, you also get 5 regional discs of PN-Series maps, to update your existing DeLorme GPS (PN-30 and higher)

New in DeLorme Topo North America 9.0

- Topographic and street detail for Canada
- Additional U.S. public lands, including Bureau of Land Management (BLM) and State Trust Lands
- Over 210,000 new or updated streets and roads
- 11,000 added U.S. national forest trails
- Locations and descriptions for the destinations found in the DeLorme Atlas & Gazetteer™ series of paper topographic atlases for U.S. states
- Automatic downloads of Pocket Query search results from Geocaching.com
- Streamlined one-step sync feature for GPS data exchanges with DeLorme PN-Series receivers (PN-30 and higher)

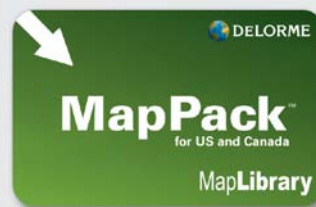


The DeLorme Map Library

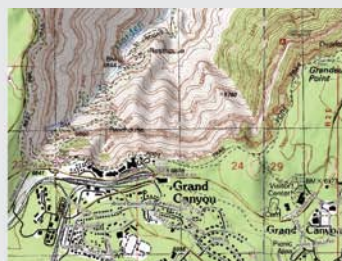
For more variety and detail, low-cost subscriptions to the unique DeLorme Map Library entitle you to unlimited amounts of supplemental maps and aerial and satellite imagery.

MapPack Subscription

- High-resolution U.S. color aerial imagery
- USGS 1:24,000 topographic quads
- NOAA nautical charts
- 1:50,000 Natural Resources Canada topographic map sheets



U.S. Color Aerial Imagery



USGS Topo Quad



NOAA Nautical Chart



Canada Topo Map

DigitalGlobe® Satellite & Aerial Imagery Subscription

- Premium resolution
- Global coverage



For display on Earthmate® PN-Series GPS receivers

Core Functions

Map Controls

The maps can be controlled using a variety of methods, including the traditional push-button zooming, which drills in/out while keeping the map exactly centered. Drag and Zoom Cursor. Also, holding down the left mouse button enables you to drag and zoom, left-to-right, across the map, and moving the mouse in the same manner but in the opposite direction zooms out.

3-D Map Views and Flyovers

See the terrain in vivid detail using the 3-D map views and controls. These realistic views also retain the various elements you add to your customized maps—trails, MapNotes, GPS waypoints, and Draw objects. The split-screen framework lets you see 2-D and 3-D maps side by side, with linked Draw tools that move and update in tandem. You can also grab the 3-D map views using the image grabber tool and scroll rapidly through 3-D views with great precision.

Find

DeLorme employs several powerful search capabilities within the software. First is QuickSearch, where you type common requests including towns, cities, lakes, mountains, lat/lons, ZIP codes, street addresses and many more to receive the quickest possible matches. The Advanced Search helps clarify more complex searches to provide the best possible results. Enhancements to Find include the ability to perform searches based on multiple criteria: address, intersection, place name, natural feature, coordinates, places of interest, and more.

Profile

The Profile tool lets you click on a route, line object, or body of water and see the elevation gain between one point and the next. Ideal for bikers, hikers, and large rigs wanting to know the elevation on their trips. It also gives you the ability to import heart rate, speed, and cadence data from GPS wrist computers, and graph them with the terrain profile for evaluation of athlete performance.

Draw

Add MapNotes; draw your own circles, polygons, and squares; measure the area of your draw objects—even draw in your own roads and route on them—these are amazingly powerful draw tools for the money.

Measure

The Measure Tool lets you measure linear distance and area on the map based on the units chosen in the Display tab of the Options dialog box. Draw polygons on the map and see the square footage or acreage of plots of land.

Info

InfoRight-click on the map to learn more about what's underneath your cursor. Lat/Lon, names of streets and bodies of water—even local radio station information—can be viewed in this manner. Moreover, the bottom toolbar of the software displays a continuously updated readout of what's underneath your cursor.

Attaching Images, Web URLs, and Other Documents

Add your own images, live Web URLs, and diagrams and documents to the maps. Embed photos and diagrams showing fleet personnel what they will find at each location. Embed URLs next to your important stops on the maps for easy access when additional information is needed or updated online.

Image Tagger

Preserve a record of exactly where you took your digital photos—all you need is a GPS track. The enlargeable thumbnail images appear on your map exactly where you took them on your trip.

Ease of Use

E-Z Nav Toolbar

The toolbar runs along the top of the interface and offers access to commonly needed options, including GPS settings, the Measure tool, MapShare and Routing functions.

Keyboard Shortcuts

Set your own keyboard shortcut preferences for optimum control when using GPS. You can design your ideal in-vehicle navigation solution to your own personal specifications.

NetLink

NetLink is your online link to DeLorme for important technical support messages, as well as the place where you select the download areas you want for use within the software.

Routing

Routing on Roads or Trails

Create automatic road routes to get you to the trailhead, then use automatic trail routing to bring on your hikes. You can create routes from the Route tab or by simply right-clicking on the map and setting your Starts, Stops, and Finish points.

Personalized Routing with Address Book

Create and save commonly-used names for places you visit often, such as "home," work," or "Dad's." Once these names are assigned, the routing Starts, Stops, and Finishes also display these names making retrieval easy for repeated usage. Customize routes using your own names and save them within MapShare for others to see. You can also include up to 200 names from your address book to be recognized using this system.

Add Local Roads to Routing

A DeLorme exclusive, this is the best way to update local roads when new developments are planned or added between DeLorme software releases. This tool is located within the Draw tab and lets you draw in the road segment, connecting it to another local road within the database. Assign a name, save it, and when you create automatic routes, the software is smart enough to include these new local roads in the routing calculations and also update the directions.

Map & Travel Information

Points-of-Interest

Topo North America includes over 4 million U.S. and Canada places of interest, including restaurants, lodgings, retailers, and businesses of all kinds. You'll also find backcountry locations, with descriptions, from the DeLorme Atlas & Gazetteer™ series of topographic map books for U.S. states.

Map Data

Topo North America offers the best of both worlds—the latest USGS and Statistics Canada digital topographic data and the DeLorme street network. Unlike the scanned topographic paper maps used in many other topographic software products, this unique DeLorme data blending assures you are working with the latest information. Topo North America's blended data enables smart searching, better labeling, and many other powerful software capabilities.

Data Download Dollars—FREE Map, Chart, and Imagery Downloads

In addition to the enhanced topographic and street maps on the Topo North America 9.0 DVD-ROM, your purchase entitles you to \$40 in new Data Download Dollars, good for supplementary data as Web downloads. Options include USGS 1:24,000 and Natural Resources Canada 1:50,000 quad maps, NOAA nautical charts, and the following imagery types: color aerial, black-and-white aerial, high-resolution cities (color aerial), and 10-meter color satellite. Visit the NetLink tab of your DeLorme software to download supplementary datasets.

GPS Features

GPS Waypoint Exchange

Use the automatic route generation tool to create the route you want without hand-drawing each object. Then exchange this track log to your handheld GPS receiver and bring the information with you into the field. Bring your field data back into the desktop software from your GPS receiver to see where you have been. Supports Garmin, Magellan, and most other NMEA-compliant receivers.

GPS Log Playback

Create a route along your favorite trail, right-click on the trail and Save as GPS Log File. Open the GPS tab, switch to 3-D mode, and play back the log file showing various icons moving along the trail. It's as close to being there as one can get without actually leaving your home.

In-Vehicle GPS Navigation

With a laptop PC and DeLorme GPS receiver

- GPS Radar—find points of interest near your current location
- 2-D or 3-D NavMode for hands-free full-screen view while navigating in your vehicle
- UMPC mode—optimizes your screen for ultra-mobile PCs and small screens
- Spoken directions and voice commands
- Plan Trip option—estimate end of day breaks, fuel stops, and fuel cost

Paperless Geocaching

Enable paperless geocaching with these advanced features:

- Search results from Pocket Queries created on Geocaching.com download automatically to Topo North America 9.0
- Field Notes can be sent directly to Geocaching.com from PN-60w with SPOT Satellite Communicator
- One-step sync when sending caches to DeLorme PN-Series handhelds (PN-30 and later)
- See cache descriptions in full, with other cachers' log notes
- Ability to project waypoints for puzzle caches
- Cache names on maps are hyperlinked to their Geocaching.com pages

Printing & Sharing

Print

Print crisp color or black & white maps that you control to best match what is seen on screen. Print maps including the elevation profile or simply print the elevation profile by itself. The split-screen maps show your various datasets and Draw objects.

MapShare

MapShare makes it easy to share your customized maps and directions with family, friends, and business associates. You create exactly the content you want and then post within our online MapShare library, which includes private administrative tools for you to manage. Similar to some of the better online photo resources, MapShare allows you to provide controlled access to your important maps without worrying about email and spam filters.

Topo North America 9.0 Minimum System Requirements

Operating Systems

- Microsoft® Window® 7 (all versions) with 1 GB of RAM (2+ GB recommended)
- Windows Vista® (all versions) with 512 MB RAM (1+ GB recommended)
- Windows XP (Service Pack 2 or later) with 512 MB RAM (1+ GB recommended)
- Microsoft Internet Explorer 7.0 or later

Hardware

- 1.5 GHz or higher processor, Pentium 4, Athlon 64 or later
- 2 GB of available hard-disk space (8 GB if all map data for North America is loaded to hard drive)
- DVD-ROM Drive
- 1024 x 768 screen resolution or higher

Macintosh®

Compatible with Intel-based Macintosh computers running Boot Camp® for Windows XP/Vista/7

For GPS Use

- Compatible with any DeLorme Earthmate GPS receivers (within PN-Series, compatible with PN-30 and higher).