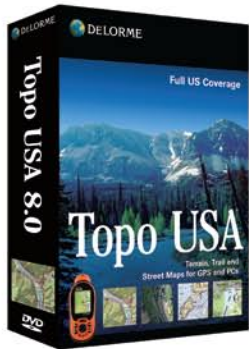


# Topo USA® 8.0



For the PC Platform

## America's Most Up-to-Date, Feature-Rich Topographic Software



- NEW! Updated highway, street, back road, and trail detail
- NEW! Highways and streets for Canada, major roads for Mexico
- NEW! Paperless geocaching with DeLorme Earthmate PN-Series GPS receivers
- NEW! NavMode with 3-D GPS tracking and voice-guided navigation, for laptop PCs and UMPCs
- The most current available USGS terrain and land cover data
- Automatic road and trail routing
- Over 4 million places of interest
- Realistic 3-D terrain views, with flyovers and 360-degree rotation

## Import Aerial Imagery, Nautical Charts, USGS Topo Maps

For use on the PC (below left) and for export to your PN-Series GPS (sample screens below right).

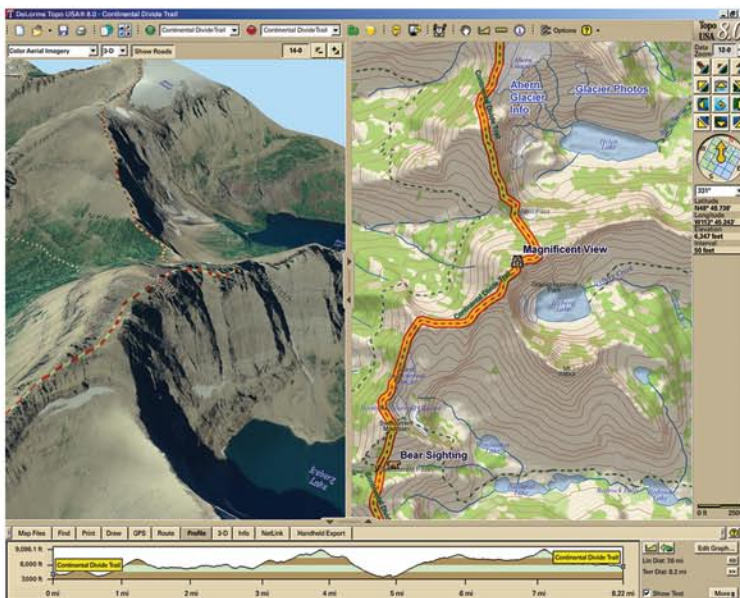


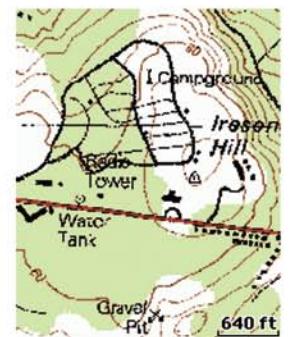
Image shows trail (broken red line) overlaid on color aerial imagery displayed in 3-D.

### Integrate Your Data Downloads with Topo USA 8.0 on Your PC for Unrivaled Planning, Routing, and Navigating

Unlike online imagery, DeLorme Data Downloads can be used in tandem with Topo USA 8.0 maps. Use the splitscreen editing capability to locate and identify structures, landmarks, navigation markers, and other features with pinpoint GPS accuracy. Full-screen viewing is also available for 3-D and downloaded imagery, maps, and charts.



Color Aerial Imagery



USGS 1:24,000 Topo Maps



NOAA Nautical Chart



USGS City Imagery

### DeLorme Map Library Subscriptions

A \$29.95 annual subscription entitles users to download all the aerial imagery, NOAA nautical charts and USGS topo maps they want.

# Discover Advanced GPS Capabilities with Topo USA® 8.0

As the innovation trendsetter in topographic mapping and GPS technologies, DeLorme Topo USA 8.0 continues to lead the way with advanced capabilities that enhance the GPS user experience.

## A Powerful Partnership

Topo USA 8.0 delivers high-end GPS data creation and exchange capabilities and lets you do more with data you collect in the field.

- Insert positionally-accurate waypoints and tracks into the maps you upload to your PN-Series receiver
- Automatically create routes on roads or trails for upload to your receiver
- Convert collected tracks to routable roads or trails
- Easily manage your collected GPS data

*In addition to PN-Series receivers, Topo USA also supports NMEA-compliant devices from Garmin, Magellan, and other providers.*



## Experience Paperless Geocaching with your Earthmate PN-Series GPS

Topo USA 8.0 allows you to easily import, export, manage, and update your geocache files.

- Import pocket queries from Geocaching.com
- See cache descriptions in full, with other cachers' log notes
- Caches display with true Geocaching.com icons
- Click and drag cursor to multi-select caches from Topo USA and send them directly to your GPS
- Cache names on maps are hyperlinked to their Geocaching.com pages



## Geo-Tag Your Digital Photos

Preserve a record of exactly where you took your digital photos – all you need is a GPS track.

- A handy wizard makes the process easy
- Enlargeable thumbnails appear on the maps
- Works with any digital time-stamped photos



➤ SRP: \$99.95

UPC: 0-19916-00563-4  
ISBN-13: 9-780899-335636  
DeLorme Item #: AO-8036-203

