

Earthmate® PN-60



Next-Generation GPS Features

Highlights

Rugged, Reliable GPS with Maps Included

The Earthmate PN-60 delivers next-generation GPS capabilities, plus DeLorme's market-leading map and aerial imagery displays. DeLorme Topo North America desktop software and GPS maps are included, with comprehensive detail for all your favorite outdoor activities in the U.S and Canada. Aerial imagery, nautical charts, and supplemental USGS and Canada topo maps are also available.

- ▶ Use the icon-based interface to easily navigate among the PN-60's map and function screens
- ▶ View cutaway elevation profiles with your position pinpointed
- ▶ Save all the maps and imagery you'll need on-device (3.5 GB internal memory)
- ▶ Save waypoints and tracks to internal memory with no finite limits; waypoints and tracks can be saved to and retrieved from SD cards
- ▶ Save up to 100 routes
- ▶ Stretch your battery life with the new Power Management System
- ▶ Choose from popular activities list to automatically set up relevant pages and info fields



Everything You Need is In the Box

- ▶ Earthmate PN-60 GPS
- ▶ Topo North America 9.0
- ▶ User Manual
- ▶ Quick Start Guide
- ▶ 2 Energizer® Ultimate Lithium AA batteries
- ▶ USB data-transfer cable for PC-GPS data exchanges
- ▶ 5 regional discs of GPS maps from Topo North America 9.0, for use on PN-Series GPS
- ▶ Certificate for \$40 worth of aerial imagery or other sample supplementary data downloads
- ▶ A sturdy, convenient neck lanyard

Why Settle for Just One Map?

The PN-60 has the amazing ability to layer multiple map and imagery types on the included Topo North America terrain and street detail.

Whatever your preferred activity, you'll never have to settle for just one map. See Map Library section below for more information on available choices.

DeLorme Topo North America

Find your position on up-to-date DeLorme Topo North America 9.0 maps.

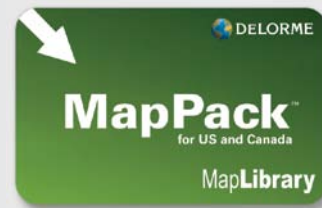
- Full U.S. and Canada terrain and street detail, Mexico main roads
- U.S. trails and public recreation areas, including BLM lands

The DeLorme Map Library

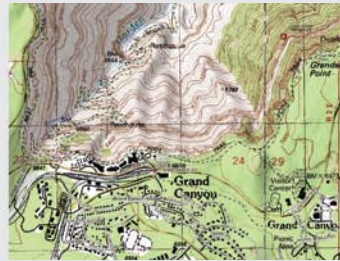
For more variety and detail, low-cost subscriptions to the unique DeLorme Map Library entitle you to unlimited amounts of supplemental maps and aerial and satellite imagery.

MapPack Subscription

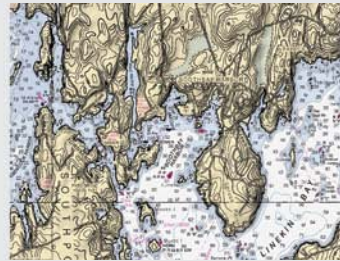
- High-resolution U.S. color aerial imagery
- USGS 1:24,000 topographic quads
- NOAA nautical charts
- 1:50,000 Natural Resources Canada topographic map sheets



U.S. Color Aerial Imagery



USGS Topo Quad



NOAA Nautical Chart



Canada Topo Map

DigitalGlobe® Satellite & Aerial Imagery Subscription

- Premium resolution
- Global coverage



For display on Earthmate® PN-Series GPS receivers

PN-60 Interface

- Intuitive, easy to use, icon-based screen navigation
- Reliable, ergonomic push-button design that enables one-handed use, even with gloves on
- High-resolution sunlight-readable screen



Full Range of Handheld GPS Capabilities for Outdoor Activities

The PN-60 supports all popular outdoor activities, with features including:

- A highly-accurate 3-axis electronic compass that works when held in any position, moving on foot or standing still
- An elevation display that pinpoints your location
- Sensitive barometric altimeter for precise elevation readings and the ability to gauge potential weather changes



Backcountry Expeditions

- Mark your vehicle and campsite locations for safety. Verify you're on the correct trail, or go off-trail with confidence. Extended battery life gives extra backcountry security.
- Up-to-date DeLorme topo maps for U.S. and Canada, aerial imagery, official USGS and Natural Resources Canada government topos, and NOAA nautical charts provide highly detailed, versatile, and accurate navigational and planning support



Day Hiking and Family Travel

- The first PN-Series GPS to have unique settings customized for different sports and activities. Just choose your activity and you're ready to go
- Create routes and search four million places of interest, from campgrounds to restaurants, to chain stores and more

Maps for Boaters

The ability to display NOAA nautical charts makes the PN-60 a valuable navigator for sea kayaking and coastal sailing. Navionics® lake maps and marine charts (sold separately on SD cards) are also supported. And, the availability of high-resolution aerial imagery provides an accurate depiction of the natural and manmade features near your location.



Paperless Geocaching

DeLorme has devoted significant resources toward offering a rewarding geocaching experience. In addition to the unique value of available aerial imagery, the PN-60 delivers a wide range of paperless geocaching capabilities.

Activity Settings

Choose one of eight pre-defined activity settings or one of two custom settings. The device will update Info Fields and Page Sequences to activity-specific settings. No more multiple steps when switching activities to customize screen views.



Customize the PN-60 to Meet Your Needs

You can customize the PN-60's Information Page for your trip so that everything you want to know is all on one screen.

- Time or distance to next turn or finish (if navigating on a route)
- Distance traveled (odometer)
- Trip time
- Speed
- Battery life, GPS accuracy
- Also create custom set-ups for quick access to the PN-60 screens and features you want for your favorite activities
- and much more!

Rugged, Waterproof, WAAS-enabled

- **The PN-60** is waterproof, impact- and vibration-resistant, and WAAS-enabled for superior accuracy. The SD-card slot is securely located in the battery compartment, so all your saved data is safe and dry
- The PN-60's **Button Lock** prevents the execution of inadvertent, unwanted commands while the device is in use

Tested in the World's Most Extreme Conditions



Ed Viesturs - American mountaineer

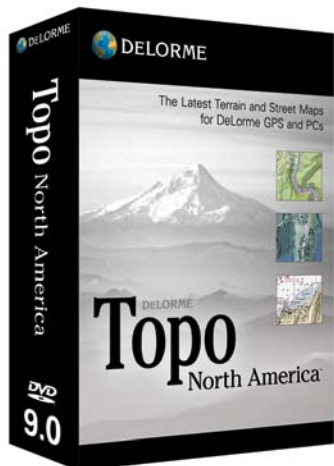


Tyler Fish - polar explorer

PN-Series receivers have been tested in some of the most extreme conditions on earth. They were the GPS of choice for John Huston and Tyler Fish during their historic Victorinox North Pole 09 expedition, and Ed Viesturs took the PN-40 on his successful 2009 ascent of Mt. Everest.

- **Military standard 810F** for vibration and shock – also tested to function in high-vibration conditions such as the Bonneville Salt Flats
- **Waterproof** to the IEC 529 IPX7 standard
- **Functions in high humidity**, including consistent humidity levels over 90%, and in the rain
- Operating temperature range for the PN-60 is -20 degrees C to +75 degrees C

DeLorme Topo North America 9.0 Included



Plan the Perfect Outdoor Experience – Anywhere in the U.S. and Canada

DeLorme Topo North America 9.0 PC desktop software is an exceptionally full-featured travel planning, routing, and GPS resource. Create customized maps with road and trail routes, and navigate worry-free in your vehicle, on foot, or on the water, anywhere from the Yukon to the Rio Grande.

- Use Topo North America to scout your trips as if you were there, with realistic 3-D and 360-degree rotation
- Locate places of interest, create driving and hiking routes, identify public lands, import maps and imagery
- Exchange GPS files with the PN-60
- Easily manage and edit your collected GPS files
- Print maps for take-along reference

Trust the Latest Map Detail

- 11,000 added U.S. national forest trails
- 210,000 new and updated roads
- U.S. Bureau of Land Management recreation lands now included
- The most up-to-date map detail from Canada government sources

U.S.-Based Cartography, Engineering, Service, and Support

DeLorme does not outsource or off-shore its development or support services. Our innovative geospatial and hardware engineering, customer care, and technical support all originate from our New England headquarters – home to Eartha, the world's largest rotating and revolving globe.



Details

Earthmate PN-60 GPS Details

Key Features:

- Intuitive icon-based user interface for easy on-device navigation
- Elevation profile cutaway views that pinpoint the user's position
- 3.5 GB of user-available Flash memory
- GPX support for improved waypoint, track, and geocache file management
 - » No finite limitations on the quantities of each that can be saved to internal memory
 - » In addition, all can be saved to and retrieved from SD cards
 - » Tracks can now hold 20,000 points (versus 10,000 with earlier PN-Series models); you can edit track settings to (upon hitting 50,000 points) automatically save the active track and start another; overwrite the existing track points (oldest first); or stop track recording entirely
- Holds 100 routes (compared to 50 with earlier PN-Series models)
- Power Management System optimizes battery performance
- Sleep When Stationary – puts device in “doze mode” if no movement is detected for 60 seconds
- Stealth Mode – mutes all audible alerts, turns off backlight
- Button-Lock – prevents unwanted device activation or data input

Powerful GPS Performance Features

- High-sensitivity 32-channel STMicroelectronics Cartesio chipset and DeLorme ConstantLock™ for quick satellite acquisition and reliable signal retention
- DeLorme predictive GPS calculates satellite positions for near instantaneous acquisition
- Dual-core processor for blazing-fast performance
- 3-axis electronic compass performs with the PN-60 held in any position
- Sensitive barometric altimeter for highly-accurate reliable altitude readings
- 65K bright-color TFT screen for clarity in any light conditions
- On-device road routing
- SDHC support up to 32 GB
- Support for paperless geocaching
- WAAS-enabled accuracy (to within 3 meters)

Map and Imagery Details

The Most Comprehensive GPS Detail Available

On-device data layering lets you see your GPS location with the advantage of numerous map and imagery choices. Switch among them to gain a comprehensive view of where you are – it's revolutionary and provides a level of geographic detail unavailable on any other handheld GPS.

Layer all these map and imagery options on your PN-60 and always have the right detail for any activity, wherever you go in the world. PN-Series receivers also display market-leading Navionics® lake maps and marine charts (no set-up required, sold separately on SD cards).

Complete Detailed U.S. and Canada Topographic and Street Maps (included with all PN-Series GPS purchases).

- Detailed vector-based maps created from the USGS topographic data and the latest DeLorme U.S. street and trail network
- U.S. land cover including bodies of water, wetlands, forests, mountains, glaciers, grasslands, rock cover & more

Canada Topographic Map Sheets

- Official Natural Resources Canada data
- Topographic contour lines, bodies of water, roads and trails, also significant buildings, historic sites, and other manmade features in urban areas.
- 1:50,000 scale
- Coverage for most of Canada

High-Resolution Color Aerial Imagery

- Best available resolution for many areas
- Provides on-the-ground detail for areas outside Topo North America coverage

USGS 7.5-Minute Quad Maps

- Authentic USGS 1:24,000 (7.5-min.) topo quads, scanned into a seamless database
- See roads, trails, locations of buildings, natural landmarks, and an endless variety of physical features

NOAA Nautical Charts

- The complete set of U.S. waterway charts available, including coastlines, Great Lakes, Alaska, Hawaii, many navigable rivers
- See aids to navigation, water depths, water body names, hazards, and more

Effortless Track, Waypoint, and Route Management Details

A green arrow shows your location on the screen map, and points in your direction of travel. For screen orientation, you can select north up, course up, or heading up. The PN-60 will automatically collect a track as you travel. You can save the collected track, use it to create a route, and (when you're back home) convert it to a routable road or trail within Topo North America.

Create waypoints with the click of a button, select from a vast menu of symbol options for the appropriate icon and add descriptive comments.

With the PN-60's search capability, you can locate cities and towns, roads, trails, natural features, points of interest including businesses, restaurants, campgrounds, and much more; any search result can be saved as a waypoint.

Create road routes or direct point-to-point routes on the device, or easily import road or trail routes from Topo North America. When navigating on a route, the PN-60 emits audible turn alerts (your choice of numerous sounds – ring, beep, whistle, etc.).

Customize the PN-60 to Meet Your Needs

You can customize the PN-60's Information Page for your trip so that everything you want to know is all on one screen

- Time or distance to next turn or finish (if navigating on a route)
- Distance traveled (odometer)
- Trip time
- Speed
- Battery life, GPS accuracy
- Also create custom set-ups for quick access to the PN-60 screens and features you want for your favorite activities
- and much more!

New Custom Controls Put You in Charge

- Button-Locking – prevents accidental unit activation or data input (enabled using the Power button)
- Stealth Mode – enforces sound and light discipline
- Power-Saving Mode – increases battery life 2x, ideal for use when packing the device for occasional check-ins but not steady usage
- Low-Level Nighttime Illumination
- Project waypoints – "Look ahead" feature for sighting downrange

DeLorme Topo North America 9.0 Details

Map Detail Includes:

- Comprehensive street and topographic coverage for the U.S. and Canada
- Land cover
- Lakes and streams
- Updated U.S. trails
- State and national parks and forests
- Boat ramps, campgrounds, hunting and fishing spots, unique natural features
- Over 4 million U.S. and Canada places of interest
- Gazetteer point data descriptions from DeLorme Atlas & Gazetteer series
- Mexico main roads

Desktop Mapping and GPS Features

- Exclusive - automatic road and trail routing
- Easy GPS file exchanges with PN-60 (waypoints, tracks, routes, geocaches)
- Exclusive - convert imported tracks to routable roads or trails
- Realistic 3-D terrain views with flyovers
- Highly-defined shaded relief
- Contour lines with elevation numbers
- Split screen integration with aerial imagery, USGS and Canada topos, NOAA nautical charts, and more
- Use draw tools to add waypoints and tracks for upload to PN-60
- Paperless geocaching, Pocket Query imports
- In-vehicle, run Topo North America 9.0 on laptop PC connected to PN-60 or other Earthmate GPS for voice-guided navigation
- Versatile print features – create handy take-along reference maps for in-vehicle, on the water, or in the field.

Specs

PN-60 Technical Specifications

Physical

- IPX7 waterproof standard
- Impact-resistant rubberized housing (Mil STD 810F)
- Device dimensions: 2.43" W x 5.25" H x 1.5" D
- Weight: without batteries: 5.35 ounces; with Li-Ion rechargeable: 6.7 oz; with 2 alkaline AAs: 7.00 oz.

Performance

- 32-channel STMicroelectronics Cartesio GPS chipset for fast, reliable satellite acquisition
- A dual-core processor for lightning quick map redraws, when panning or zooming
- Fast USB 2.0 data transfer to internal memory or SD card in device
- Proprietary Kalman filter for enhanced GPS accuracy
- Detailed onboard base map with major streets and highways worldwide, plus U.S. secondary roads

Sensors

- 3-axis electronic compass with included accelerometer performs when held in any position
- Sensitive barometric altimeter for reliably accurate altitude readings

Power

- Uses 2 AA batteries (included)
- Optional Travel Power Kit with DeLorme-supplied rechargeable Li-Ion battery

Receiver

- Super high-sensitivity 32-channel Cartesio chipset by STMicroelectronics for rapid signal acquisition
- ConstantLock™ satellite retention, even in challenging GPS environments
- Predictive GPS for near-instantaneous acquisition

Acquisition Times:

- Hot start: 5-6 seconds
- Warm start: < 45 seconds
- Cold start: < 60 seconds
- Update rate: 1/second, continuous

GPS accuracy:

- Position: < 15 meters, 95% typical
- Velocity: 0.05 meter/sec steady state

WAAS accuracy:

- Position: < 3 meters, 95% typical

Display:

- Sharp high-resolution 2.2" (220 x 176 pixels)
- 65K-color Transflective TFT screen

Memory and Storage

- 3.5 GB internal Flash memory
- Supports SDHC high-capacity SD cards – up to 32 GB

DeLorme Topo North America 9.0 Minimum System Requirements

Operating Systems

- Microsoft® Window® 7 (all versions) with 1GB of RAM (2+ GB recommended)
- Windows Vista® (all versions) with 512 MB RAM (1+ GB recommended)
- Windows XP (Service Pack 2 or later) with 512 MB RAM (1+ GB recommended)
- Microsoft Internet Explorer 7.0 or later

Hardware

- 1.5 GHz or higher processor, Pentium 4, Athlon 64 or later
- 2 GB of available hard-disk space (8 GB if all map data for North America is loaded to hard drive)
- DVD-ROM Drive
- 1024 x 768 screen resolution or higher

Macintosh®

- Compatible with Intel-based Macintosh computers running Boot Camp® for Windows XP/Vista/7

For GPS Use

- Compatible with any DeLorme Earthmate GPS receiver