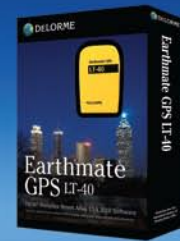


# Earthmate® GPS LT-40

Includes Street Atlas USA® 2010

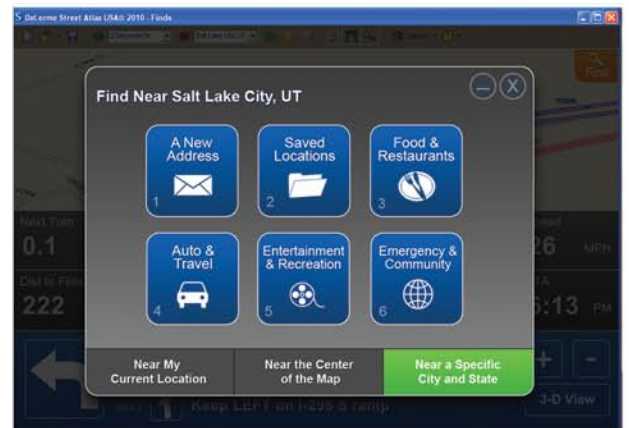
 **DELORME**



## Turn Your Laptop or UMPC into a Powerful GPS Navigator

High-end GPS capabilities at an unbeatable price! With the included Street Atlas USA software running on your laptop PC or UMPC, just plug the Earthmate GPS LT-40 into a USB port, secure the GPS on your dash, and you're ready to go. Get voice-guided navigation, automatic Back-on-Track routing, GPS Radar to locate upcoming places of interest as you travel, aerial imagery, much more.

- NEW! E-Z Nav wizard makes on-the-go routing a breeze
- NEW! Support for netbooks
- NEW! Over 300,000 roads and road name updates



Exclusive DeLorme Features	DeLorme Earthmate LT-40 with Street Atlas USA software	Microsoft Streets & Trips with GPS Locator
Support for netbooks and ultra-mobile personal computers (UMPCs)	<b>YES</b>	NO
Optional 3-D viewing perspective when GPS tracking	<b>YES</b>	NO
More than 10 years experience making integrated mapping and laptop GPS solutions	<b>YES</b>	NO
Offers voice command option for you to ask the laptop PC questions and to hear responses (e.g., "How far to my next turn?")	<b>YES</b>	NO
Includes automatic back-on-track routing offering new directions to get you back on your pre-planned route with off-route distance settings you control	<b>YES</b>	NO
Provides high-contrast map color settings showing streets and roads in bright contrasting colors to improve in-vehicle visibility	<b>YES</b>	NO
Includes large fonts for easier typing when conducting searches on laptops—ideal for high-resolution laptop screens	<b>YES</b>	NO
Offers next-turn and turn-after-that large directional arrows and large-font text directions for ideal navigation mode	<b>YES</b>	NO
Includes Center-on-GPS setting allowing you to scout ahead on the map without always snapping back to your GPS position	<b>YES</b>	NO
Includes ability to GPS track on free aerial imagery downloaded from DeLorme	<b>YES</b>	NO
Provides GPS Radar searches with voice prompts that look for services near your current GPS location, displaying information about each with directions to get there	<b>YES</b>	NO
Offers ability to control many GPS settings such as length of the breadcrumb trail, voice settings, and distance off-track before automatic re-routing kicks in	<b>YES</b>	NO