



NEWS RELEASE

June 24, 2009 – For Immediate Release

Media Contact
Charlie Conley
charlie.conley@delorme.com
207.846.7000, ext. 2149

New DeLorme Earthmate® PN-30 Handheld GPS Delivers High-End Features, Plus Ease of Use

Available Beginning in July 2009, Priced at Under \$300

YARMOUTH, ME — DeLorme, the innovation leader in mapping and GPS technology for outdoor adventures, today announced its upcoming release of the **Earthmate PN-30** handheld GPS receiver. It offers top-end GPS capabilities, plus the *PN-Series* exclusive aerial imagery display features, but it's also affordably priced and easy to use.

DeLorme PN-Series topographic map DVDS are included for effortless transfers to the device; users can load the maps they need and be ready to go within minutes of opening the package.

In the field, users will discover lightning-quick satellite acquisition, thanks to the high-sensitivity 32-channel Cartesio chipset. Signal retention is ultra-reliable even in dense forests. A powerful dual-core processor renders map and imagery screen views with instantaneous speed.

The *PN-30* is waterproof and WAAS-enabled for superior accuracy, and has a bright-color TFT screen for readability in any light conditions. With all those features, the PN-30 carries a remarkably affordable \$299.95 suggested retail price.

Detailed Maps, Aerial Imagery, NOAA Nautical Charts

The included *PN-Series* Map DVDs will transfer maps to the *PN-30* or an SD card, from either PCs or Macs. The up-to-date detail includes U.S. topography, U.S. and Canada streets, roads, and places of interest, and Mexico main roads.

Also included is a sample certificate for the online DeLorme Map Library, where users can go to download aerial imagery, USGS 1:24,000 topographic quads, and NOAA nautical charts. All Map Library downloads can be sent directly to, and displayed on the *PN-30*. For a low-cost \$29.95 annual subscription, users can download and keep all the Map Library maps and imagery they want (PC and Mac accessible).

With all these map and imagery options, the PN-30 offers exceptional versatility for a wide range of activities, including hiking, mountain biking, fishing, boating, kayaking, geocaching, and more. No other handheld GPS provider can match DeLorme's map and supplemental data offerings.

Support for Navionics Charts

The *PN-30* also displays Navionics HotMaps (lake) and Gold (marine) charts, which are sold separately by major boating and sporting goods suppliers. Widely recognized as the leader in charts by boaters and



Also available in genuine Realtree® AP™ camouflage pattern

Page 2 — DeLorme Earthmate PN-30

anglers, Navionics charts come on SD cards that are instantly recognized by the *PN-30*; no setup is required.

Unique *Topo USA* Mapping Software Included

For desktop mapping on the PC, the *PN-30* comes with newly-released DeLorme *Topo USA 8.0* DVD software. Users can scout their trips in advance, create road and trail routes automatically, print maps, geo-tag photos with their exact GPS location and much more.

Topo USA also uniquely enables users to import collected GPS tracks and quickly convert them to routable roads or trails.

Topo USA generates realistic 3-D views of any U.S. location, with flyovers, and displays aerial imagery, USGS quad, and NOAA nautical chart downloads from the DeLorme Map Library. The up-to-date detail includes 4 million places of interest, plus campgrounds, boat ramps, BLM lands, and national parks and forests. Full print capabilities are available.

Paperless Geocaching

The *PN-30* and *Topo USA* provide a wide range of paperless geocaching capabilities. There is a virtually unlimited character count for cache descriptions, and the new Cache Register widget (available only online from DeLorme) enables fast and easy synchronization of Pocket Query search results from Geocaching.com.

Rock-Solid Reliability

The *PN-30* has an impact-resistant and waterproof (IPX7) rubberized housing. *PN-Series* receivers have performed successfully in some of the world's most extreme conditions — most recently during this year's Victorinox North Pole 09 expedition, and famed climber Ed Viesturs' May ascent of Mt. Everest.

Availability

The *PN-30* will be available beginning in July 2009 at retail stores and online sites specializing in GPS, outdoor recreation, and electronics products. It can also be ordered from DeLorme, at www.delorme.com, or by calling **800-561-5105**. Customers can choose the *PN-30* in either Safety Green or genuine Realtree AP camouflage.

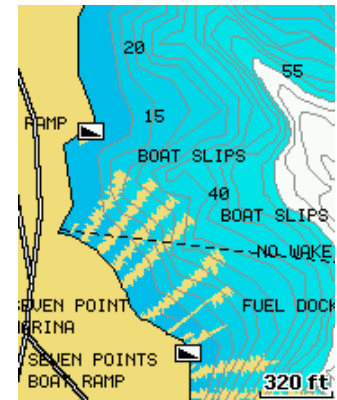
About DeLorme

DeLorme is the longtime leader in innovative mapping and GPS solutions for both consumer and professional markets. Based in Yarmouth, ME, DeLorme offers a unique set of core competencies across the complex areas of map data creation and management, software development, and integration with GPS. The ability to develop all the critical components necessary to compete in the fast-changing navigation world provides a distinct competitive advantage. DeLorme is one of a handful of mapmakers that still own and produce their own content, and its *Street Atlas USA*, *Topo USA*, and *Earthmate* GPS products have introduced countless first-to-market innovations. To learn more, go to www.delorme.com.

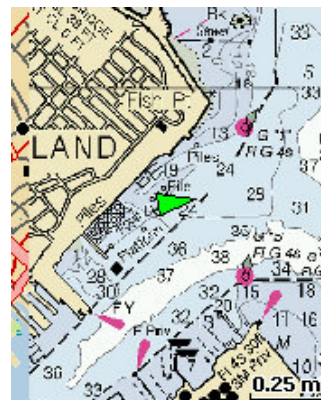
PN-30 Screen Samples



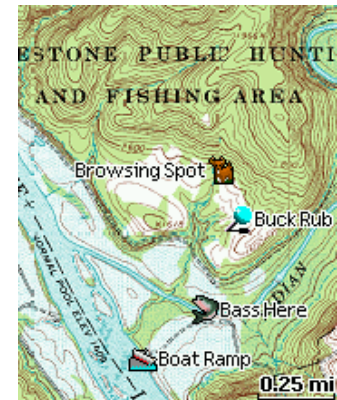
Color Aerial Imagery



Navionics Charts



NOAA Nautical Charts



USGS 1:24,000 Topo Quads